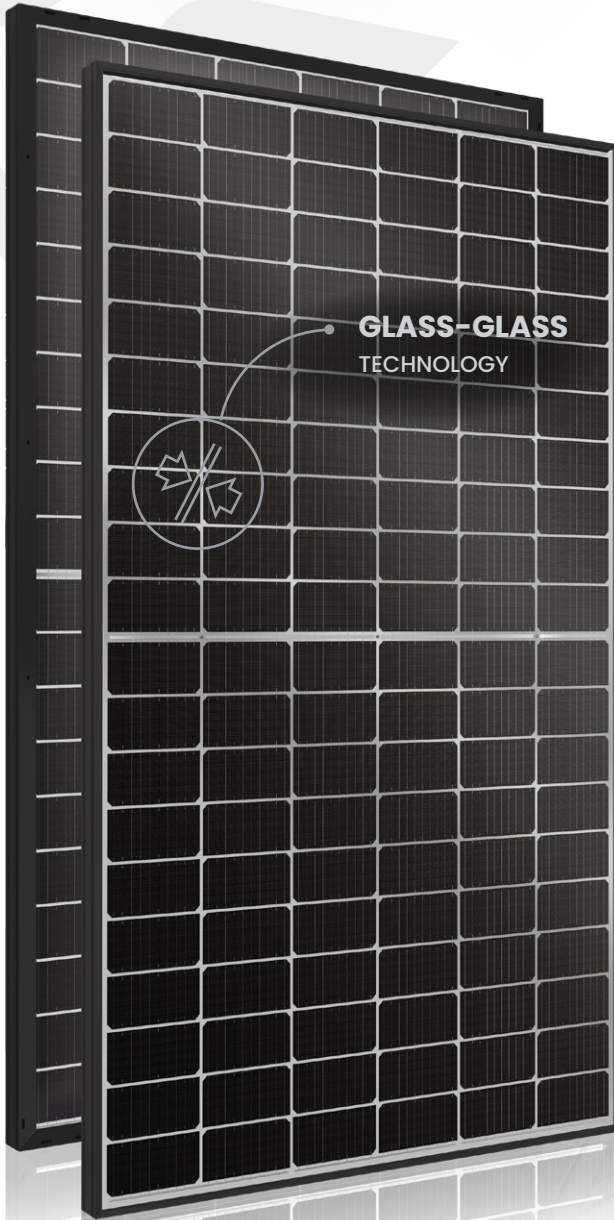


AVRii SOL

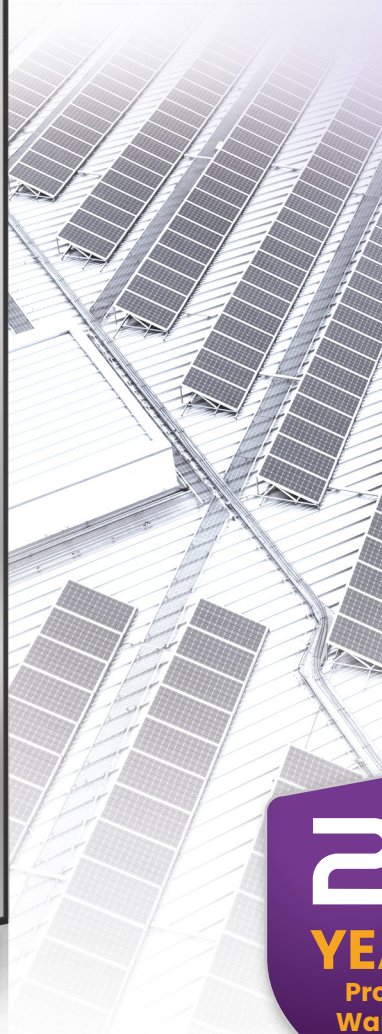
MODULES

Avrii SOL N-Power

GG-470 ~ 490 WB



GLASS-GLASS
TECHNOLOGY



20
YEARS
Product
Warranty



High-efficiency multi-busbar N-type monocrystalline half-cells



Fire class A



Exceptional weather resistance

Bifacial technology



Higher efficiency



PID resistance



Linear performance warranty
20 Years Product Warranty
30 Years Linear Power Warranty



More than
energy



EUROPEAN
PRODUCER

Avrii SOL N-Power MODULE

Avrii SOL N-Power GG-470~490

ELECTRICAL PARAMETERS STC

	GG-470	GG-475	GG-480	GG-485	GG-490
Nominal power [Wp]	470	475	480	485	490
Short-circuit current [A]	13,88	13,94	14,00	14,06	14,12
Maximum power current [A]	13,25	13,31	13,37	13,43	13,49
Open-circuit voltage [V]	42,10	42,28	42,46	42,64	42,82
Maximum power voltage [V]	35,48	35,69	35,90	36,11	36,32
Efficiency [%]	21,71	21,94	22,17	22,40	22,63

STC: Irradiance 1000 W/m², Air mass 1.5 AM, Cells temperature 25 °C.
Measurement tolerance STC ± 2 %.

ELECTRICAL PARAMETERS LIC

	GG-470	GG-475	GG-480	GG-485	GG-490
Nominal power [Wp]	89,74	90,68	91,63	92,58	93,53
Short-circuit current [A]	2,73	2,74	2,76	2,77	2,78
Maximum power current [A]	2,58	2,59	2,60	2,61	2,62
Open-circuit voltage [V]	39,21	39,38	39,54	39,71	39,88
Maximum power voltage [V]	34,83	35,03	35,24	35,45	35,65

LIC: Irradiance 200 W/m², Air mass 1.5 AM, Cells temperature 25 °C.
Measurement tolerance STC ± 5 %.

Rear Side Power Gain (10-30%)*

	GG-470	GG-475	GG-480	GG-485	GG-490
Maximum power [Wp]	517-611	522,5-617,5	528-624	533,5-630,5	539-637
Short-circuit current [A]	15,27-18,04	15,33-18,12	15,40-18,20	15,47-18,28	15,53-18,36
Maximum power current [A]	14,58-17,23	14,64-17,30	14,71-17,38	14,77-17,46	14,84-17,54
Open-circuit voltage [V]	42,10	42,28	42,46	42,64	42,82
Maximum power voltage [V]	35,48	35,69	35,90	36,11	36,32

*Depending on the reflection of the undrying surface.

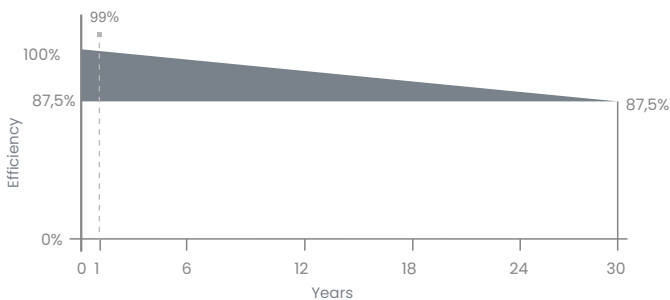
TEMPERATURE PARAMETERS

Current temperature coeff.	0,046%/°C
Voltage temperature coeff.	-0,25%/°C
Power temperature coeff.	-0,29%/°C

PRODUCT CERTIFICATIONS

IEC 61215, IEC 61730

CE Declaration of Conformity



COMPOSITION

Front glass	2 mm, Tempered
Encapsulant	EPE/EVA film
Back glass	2 mm, Tempered
Frame	Anodised aluminium, black
Cells	N-Type, Class A
Cells quantity	120
Junction box	IP68, 3 by-pass diodes
Cables	2 x 1100 mm, φ = 4 mm ²
Connectors	MC4 compatible, IP68

OPERATING PARAMETERS

Power tolerance	0/1%
Safety class	II
Maximum system voltage	1500 VDC
Operating temperature	-40 to +85°C
Reverse current protection	25 A

MECHANICAL PARAMETERS

Length [mm]	1909
Width [mm]	1134
Height [mm]	30
Weight [kg]	26

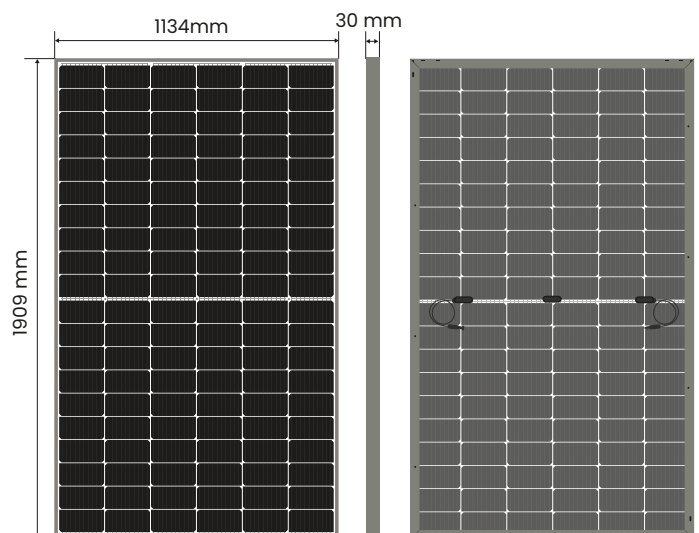
ENDURANCE PARAMETERS*

Maximum Snow Load	7000 Pa
Maximum Wind Load	4000 Pa
Hail Endurance	φ = 35 mm, V=82,8 km/h

*Results obtained from internal tests.

PACKING

Packing system	Carton box 2,0 x 1,25 x 1,2
Quantity	36 Pcs/Pallet
Transport	26 Pallets/Truck



The technical sheet contains information valid as of the date specified in the document revision. Due to ongoing research and the introduction of new products, Avrii reserves the right to make any changes to these parameters without prior notice.

Datasheet_EN_AvriiSOL_N-Power_Modules_GG-470-490_Rev1.2_12.09.2024

AVRII

Avrii Sp. z o. o., Mroźna 8, 33-102 Tarnów, Poland
+48 14 696 88 89 (6)
info@avrii.eu



Management System
ISO 9001:2015
ISO 14001:2015
ISO 45001:2018
www.avrii.com
ID 500002985

avrii.eu