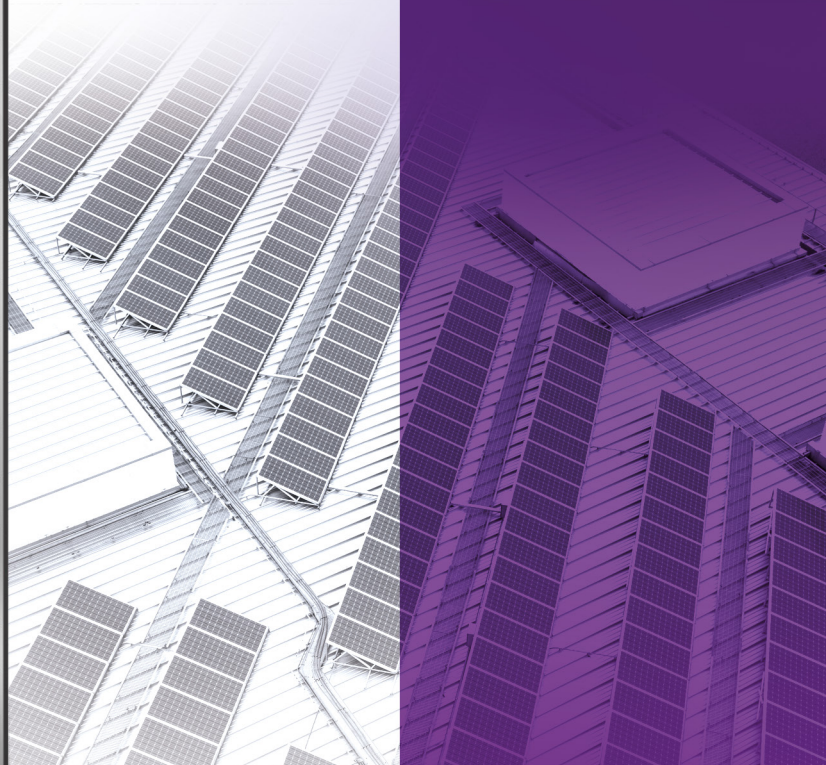
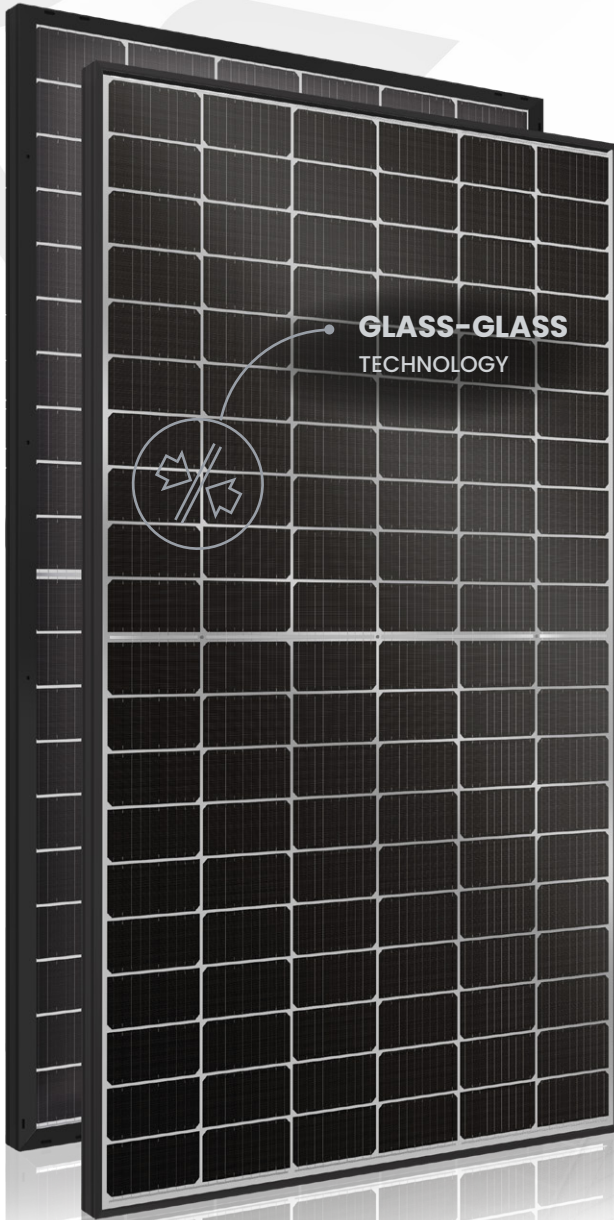


AVRii SOL

MODULES

Avrii SOL N-Power

GG-470 ~ 490



30
YEARS
Product
Warranty



Dual tempered glass
- 2 mm each



High-efficiency multi
-busbar N-type
monocrystalline half-cells



Fire class A



Exceptional weather
resistance

Higher efficiency



PID resistance



Linear performance warranty
30 Years Product Warranty
30 Years Linear Power Warranty



More than
energy



EUROPEAN
PRODUCER

Avrii SOL N-Power MODULE

Avrii SOL N-Power GG-470~490

ELECTRICAL PARAMETERS STC

| | GG-470 | GG-475 | GG-480 | GG-485 | GG-490 |
|---------------------------|--------|--------|--------|--------|--------|
| Nominal power [Wp] | 470 | 475 | 480 | 485 | 490 |
| Short-circuit current [A] | 13,88 | 13,94 | 14,00 | 14,06 | 14,12 |
| Maximum power current [A] | 13,25 | 13,31 | 13,37 | 13,43 | 13,49 |
| Open-circuit voltage [V] | 42,10 | 42,28 | 42,46 | 42,64 | 42,82 |
| Maximum power voltage [V] | 35,48 | 35,69 | 35,90 | 36,11 | 36,32 |
| Efficiency [%] | 21,71 | 21,94 | 22,17 | 22,40 | 22,63 |

STC: Irradiance 1000 W/m², Air mass 1.5 AM, Cells temperature 25 °C.
Measurement tolerance STC ± 2 %.

ELECTRICAL PARAMETERS LIC

| | GG-470 | GG-475 | GG-480 | GG-485 | GG-490 |
|---------------------------|--------|--------|--------|--------|--------|
| Nominal power [Wp] | 89,74 | 90,68 | 91,63 | 92,58 | 93,53 |
| Short-circuit current [A] | 2,73 | 2,74 | 2,76 | 2,77 | 2,78 |
| Maximum power current [A] | 2,58 | 2,59 | 2,60 | 2,61 | 2,62 |
| Open-circuit voltage [V] | 39,21 | 39,38 | 39,54 | 39,71 | 39,88 |
| Maximum power voltage [V] | 34,83 | 35,03 | 35,24 | 35,45 | 35,65 |

LIC: Irradiance 200 W/m², Air mass 1.5 AM, Cells temperature 25 °C.
Measurement tolerance STC ± 5 %.

Rear Side Power Gain (10-30%)*

| | GG-470 | GG-475 | GG-480 | GG-485 | GG-490 |
|---------------------------|-------------|-------------|-------------|-------------|-------------|
| Maximum power [Wp] | 517-611 | 522,5-617,5 | 528-624 | 533,5-630,5 | 539-637 |
| Short-circuit current [A] | 15,27-18,04 | 15,33-18,12 | 15,40-18,20 | 15,47-18,28 | 15,53-18,36 |
| Maximum power current [A] | 14,58-17,23 | 14,64-17,30 | 14,71-17,38 | 14,77-17,46 | 14,84-17,54 |
| Open-circuit voltage [V] | 42,10 | 42,28 | 42,46 | 42,64 | 42,82 |
| Maximum power voltage [V] | 35,48 | 35,69 | 35,90 | 36,11 | 36,32 |

*Depending on the reflection of the undrying surface.

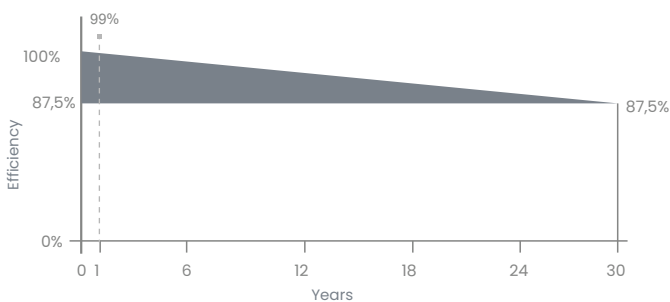
TEMPERATURE PARAMETERS

| | |
|----------------------------|-----------|
| Current temperature coeff. | 0,046%/°C |
| Voltage temperature coeff. | -0,25%/°C |
| Power temperature coeff. | -0,29%/°C |

PRODUCT CERTIFICATIONS

IEC 61215, IEC 61730

CE Declaration of Conformity



COMPOSITION

| | |
|----------------|---------------------------------------------|
| Front glass | 2 mm, Tempered |
| Encapsulant | EPE/EVA film |
| Back glass | 2 mm, Tempered |
| Frame | Anodised aluminium, black |
| Cells | N-Type, Class A |
| Cells quantity | 120 |
| Junction box | IP68, 3 by-pass diodes |
| Cables | 2 x 1100 mm, $\varnothing = 4 \text{ mm}^2$ |
| Connectors | MC4 compatible, IP68 |

OPERATING PARAMETERS

| | |
|----------------------------|--------------|
| Power tolerance | 0/1% |
| Safety class | II |
| Maximum system voltage | 1500 VDC |
| Operating temperature | -40 to +85°C |
| Reverse current protection | 25 A |

MECHANICAL PARAMETERS

| | |
|-------------|------|
| Length [mm] | 1909 |
| Width [mm] | 1134 |
| Height [mm] | 30 |
| Weight [kg] | 26 |

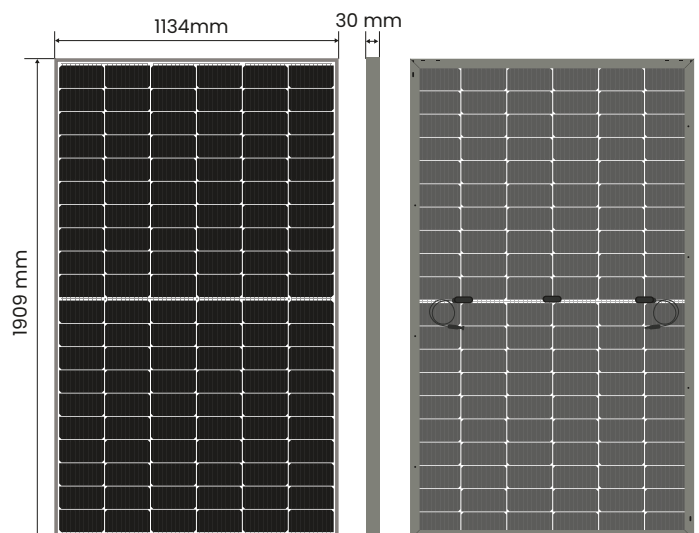
ENDURANCE PARAMETERS*

| | |
|-------------------|----------------------------------------------------|
| Maximum Snow Load | 7000 Pa |
| Maximum Wind Load | 4000 Pa |
| Hail Endurance | $\varnothing = 35 \text{ mm}, V=82,8 \text{ km/h}$ |

*Results obtained from internal tests.

PACKING

| | |
|----------------|-----------------------------|
| Packing system | Carton box 2,0 x 1,25 x 1,2 |
| Quantity | 34 Pcs/Pallet |
| Transport | 26 Pallets/Truck |



The technical sheet contains information valid as of the date specified in the document revision. Due to ongoing research and the introduction of new products, Avrii reserves the right to make any changes to these parameters without prior notice.

Datasheet_EN_AvriiSOL_N-Power_Modules_GG-470-490_Rev1.0_25.03.2024

AVRII

Avrii Sp. z o.o., Mroźna 8, 33-102 Tarnów, Poland
+48 14 696 88 89 (6)
info@avrii.eu



Management System
ISO 9001:2015
ISO 14001:2015
ISO 45001:2018
www.avrii.com
ID: 5000029805

avrii.eu